

## Emigre Fonts

Thank you for your font purchase!

To protect your investment, please make sure your registration is complete.

### Registration

Registered owners receive free technical support for 60 days. You are automatically registered when purchasing fonts directly from Emigre. When purchasing from a dealer, register your Emigre fonts online within 30 days of purchase at: <http://www.emigre.com/fontreg>

Please inform us if you have a change of address so that we may keep you current on any upgrades at: [sales@emigre.com](mailto:sales@emigre.com)

### Font Installation

See the installation instructions page below or go to: <http://www.emigre.com/EFTS.php>

To avoid problems, do not attempt to alter the names of any font files. If you have a font management utility installed, please refer to its user's guide to determine if the instructions given here apply.

Macintosh PostScript, Macintosh TrueType and Windows formats are sold separately.

Click on a section below:

[Emigre Fonts User License](#)

[Installation Instructions](#)

[OpenType Features](#)

### Contact:

Emigre, Inc. Email: [sales@emigre.com](mailto:sales@emigre.com)

Technical Support: [support@emigre.com](mailto:support@emigre.com)

Emigre Online: <http://www.emigre.com>

Font registration: <http://www.emigre.com/fontreg>

## Emigre Fonts User License - Software License Agreement

### You agree to the following user licensing terms:

1. The Emigre Font Software is licensed for use at one (1) location with a maximum of five (5) devices.
2. Use of the Emigre Font Software at more than one (1) location or with more than five (5) devices requires a Multi-Device Site License upgrade. A device may be, but is not limited to, a printer, rasterizer, video display terminal, CPU, workstation or any device where the font software is rasterized or display of the Emigre Font is generated from font software outlines using Adobe Type Manager or similar software. For example, a display terminal shall be considered a device if the Emigre Font outline is embedded or otherwise included for viewing by end users in a multimedia CD.
3. Except as permitted herein, you may not modify, adapt, translate, reverse engineer, decompile, disassemble, alter or otherwise copy the Emigre Font Software.
4. You are permitted to make a single back-up copy. The Emigre Font Software or documentation may not be sublicensed, sold, leased, rented, lent, or given away to another person or entity.
5. The Emigre Font Software may be returned or exchanged only if defective. Defective software will be replaced when accompanied by a valid sales receipt and Emigre is notified within one (1) week of purchase.
6. You agree that any derivative works created by you from the Emigre Font Software, including, but not limited to, software, EPS files, or other electronic works, are considered derivative works under U.S. Law and use of the derivative work is subject to the terms and conditions of this License Agreement. Derivative works may not be sublicensed, sold, leased, rented, lent, or given away without written permission from Emigre. Emigre shall not be responsible for unauthorized, modified and/or regenerated software or derivative works. Embedding of the Emigre Fonts Software in any form is strictly prohibited without an additional license.
7. The Emigre Font Software is protected under domestic and international trademark and copyright law. You agree to identify the Emigre fonts by name and credit Emigre's ownership of the trademarks and copyrights in any design or production credits.
8. Any breach of the terms of this Agreement shall be cause for termination. In the event of termination, and without limitation of any remedies under law and equity, you agree to immediately return the Font Software to Emigre and certify that no copy remains in your possession or control.
9. EMIGRE MAKES NO WARRANTIES, EXPRESS OR IMPLIED AS TO MERCHANTABILITY, FITNESS FOR A PARTICULAR PURPOSE, OR OTHERWISE. WITHOUT LIMITING THE FOREGOING, EMIGRE SHALL IN NO EVENT BE LIABLE TO THE LICENSED USER OR ANY OTHER THIRD PARTY FOR ANY DIRECT, INDIRECT, CONSEQUENTIAL, OR INCIDENTAL DAMAGES, INCLUDING DAMAGES FROM LOSS OF BUSINESS PROFITS, BUSINESS INTERRUPTION, LOSS OF BUSINESS INFORMATION, ARISING OUT OF THE USE OR INABILITY TO USE THE PRODUCT EVEN IF NOTIFIED IN ADVANCE. UNDER NO CIRCUMSTANCES SHALL EMIGRE'S LIABILITY EXCEED THE REPLACEMENT COST OF THE SOFTWARE. FOR MORE INFORMATION REGARDING THIS LICENSE GO TO: <http://www.emigre.com/EUL.php>

**FONT EMBEDDING** Embedding of the Emigre Fonts Software in digital documents or in any other form is governed by a separate license agreement. If an embedding license is desired, the licensee must represent and warrant that licensee's encryption of the embedded Emigre Fonts is secure enough to prevent any access or use by others. For more information regarding an Embedding License go to: <http://www.emigre.com/Embedding.php>

### LICENSE UPGRADES

The Emigre Font Software is licensed for use at a single location for use with a maximum five (5) devices. The Emigre Font Software may not be shared between locations or business entities. Each additional location and/or entity must purchase a separate license to be used in accordance with the terms of the Emigre Font Software License. License upgrades may be purchased for use with additional devices. The upgrade price is calculated as a percentage of the original price of the software. To determine the number of devices, add up all CPUs, workstations, printers, and other devices that use the fonts. The following is cumulative:

- 1 - 5 devices (standard license)
- 6 -10 devices: add 50 percent
- 11-50 devices: add 20% for each 5 devices
- 51-125 devices: add 15% for each 5 devices
- 126-250 devices: add 10% for each 5 devices
- over 251 devices: add 5% for each 5 devices

Very large or unlimited uses of the Emigre Font Software will require a custom license agreement. For information about various license options go to: <http://www.emigre.com/EULOptions.php>

Click on a section below:

[Registration](#)

[Installation Instructions](#)

[OpenType Features](#)

## Installation Instructions

### OpenType system requirements:

Macintosh OS 8.1 or higher with Adobe Type Manager 4.6 or higher.

Microsoft Windows 95 or higher with Adobe Type Manager 4.1 or higher.

For the most recent installation instructions, please see <http://www.emigre.com/support>

### Macintosh Installation for OS X ("Native" for Carbon/Cocoa Applications)

1. Quit all applications.
2. Select the OpenType (.otf) font files to install.  
(Be sure to select the fonts themselves, not a folder containing the fonts.)
3. Drag and drop the icons into the Fonts folder in the Library folder. Click OK to install the fonts.

**Macintosh Installation for OS 8.x and OS 9.x**  
**Requires Adobe Type Manager 4.6 or later.**  
ATM Light is available for free from Adobe's Web site:  
<http://www.adobe.com>

1. Quit all applications.
2. Select the OpenType (.otf) font files to install.  
(Be sure to select the fonts themselves, not a folder containing the fonts.)
3. Drag and drop the icons into the Fonts folder inside the System folder. Click OK to install the fonts.

### Windows Installation:

**For Microsoft Windows 95 or later.**

**Requires Adobe Type Manager 4.1 or later.**

ATM Light is available for free from Adobe's Web site:  
<http://www.adobe.com>

1. Open the ATM Control Panel.
2. Click the Add button.
3. In the Directories list box, choose the appropriate drive and directory that contain the font(s) you want to add.
4. Select the fonts you want to install and click the Add button. ATM will copy the appropriate PFM (font metrics) and PFB (PostScript outline fonts) files to the default target directories. The newly added fonts will now appear in the Installed ATM Fonts list.
5. Exit from the ATM Control Panel.
6. Quit and restart Windows to use the new fonts.

Click on a section below:

[Registration](#)

[Emigre Fonts User License](#)

[OpenType Features](#)

# OpenType Features

## Accessing OpenType Features with Adobe InDesign

1. Select some text.
2. Select an OpenType font from the font menu, Control palette or Character palette.

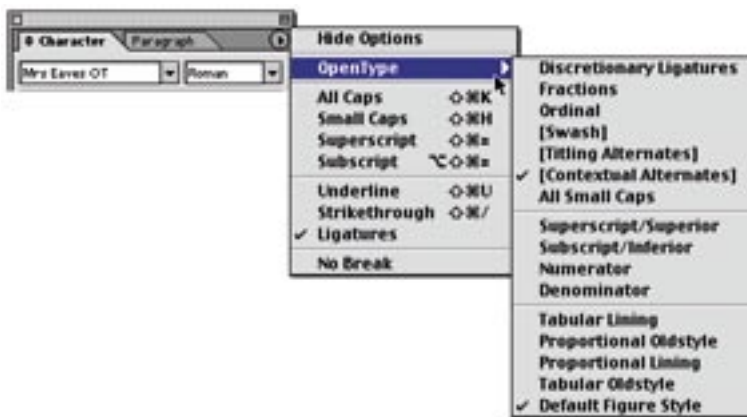
Note: OpenType fonts have an "O" icon to the left of the font name.

3. In the OpenType "Character" palette menu, select an OpenType attribute by clicking on the small triangle in the top right corner and pull down to the features.

Activated features appear with a check mark.

Unavailable features appear in square brackets []

Note: most features are located in the "OpenType" submenu.



Click on a section below:

[Registration](#)

[Emigre Fonts User License](#)

[Installation Instructions](#)